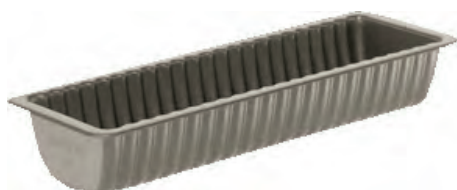


**Reerugvorm - gesiliconeerd**  
Ridged baking mould - silicined



Nr / No	afm./dim. cm
<b>3586202</b>	28x11x6
<b>3586203</b>	33x11x6

**Cake blik - gesiliconeerd**  
Loaf cake mould - silicined



Nr / No	afm./dim. cm
<b>3586204</b>	20x 9x6,5
<b>3586205</b>	25x10x7
<b>3586206</b>	30x11x7,5
<b>3586207</b>	35x12x8

**Tulbandvorm - gesiliconeerd**  
Rodon mould - silicined



Nr / No	Ø cm	H cm
<b>3586235</b>	14	8
<b>3586236</b>	16	8,5
<b>3586237</b>	18	9
<b>3586238</b>	20	10
<b>3586239</b>	22	11
<b>3586240</b>	24	12
<b>3586241</b>	26	12,5

**Savarinvorm - gesiliconeerd**  
Sponge-cake mould - silicined



Nr / No	Ø cm	H cm	pijp/tube cm
<b>3586227</b>	24	7,7	10
<b>3586228</b>	26	8,2	11
<b>3586229</b>	28	8,9	13

**Briochevorm - gesiliconeerd**  
Brioche mould - silicined



Nr / No	Ø cm
<b>3586264</b>	12
<b>3586265</b>	14
<b>3586266</b>	16